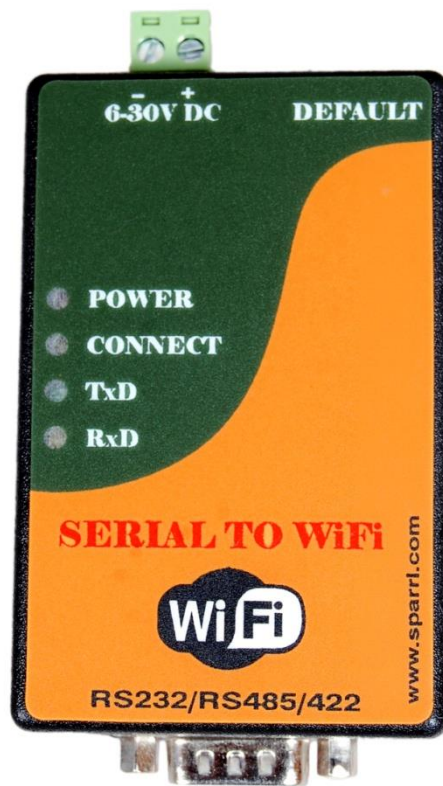


Sparr Electronics Limited



User Manual
Serial to WIFI Converter

CONTENTS

1. Introduction	3
2. LED Indications	3
3. Getting Started	3
4. Default Setting	6
5. Contact and Support	6

Manual Revision	Revision Date	List of Updates
00	23/09/2016	
01	27/07/2017	1. Contact Information

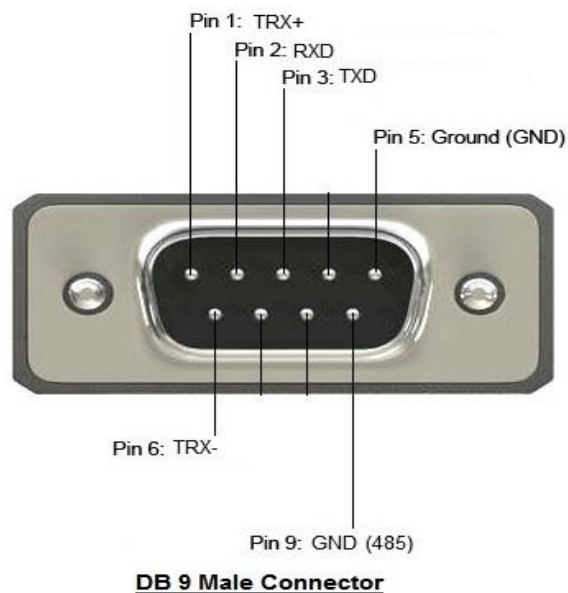
1. Introduction

WI-FI Modbus adapter is built in the embedded TCP/IP and compatible with IEEE 802.11 b/g/n standard. The products will support the wide range of power supply from 6 to 24 VDC input. The high performance RF features will support long range of wireless coverage. The serial port will support RS-485 Modbus interface.

2. LED Indications

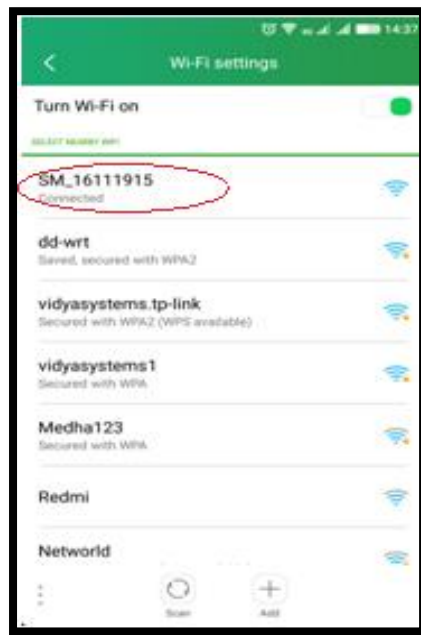
INDICATOR	ACTION	STATUS
POWER-GREEN LED	ON	Power ON
CONNECT-RED LED	Blink 150 ms	Default is loaded
	OFF	Device is connected to Wi-Fi Router
	Blink 500 ms	Communication

3. Pin Description



4. Getting Started

- 1) Insert the 12V 500mA power supply adaptor in to the DC jack.
- 2) When the device is powered ON Power LED (green) and Connect LED (red) are ON, it broadcasts an Access Point like "SM_10614620" which can be accessed with any Wi-Fi Enabled Device and connect to it.
(Note: Access point name varies with device, "SM" remains same).



- 3) Open the android application and select the corresponding MAC address. Click on 'CONNECT'
- 4) Click on Configure button.



Enter the Wi-Fi network credentials to which the device has to be connected and fill remaining parameters for the communication.

192.168.4.1/0wifi?

SSID

password

Baudrate

Data Parameters

Character Wait Timeout (msec)

Serial Interface Mode

Save

[Back](#)

192.168.4.1/0wifi?

dd-wrt

.....

9600

8E1

1000

RS485

Save

[Back](#)

5) Click on Save button to save the configured values

Vodafone IN | AIRC 14:28

TCPMOD

CONFIGURATION GET IP

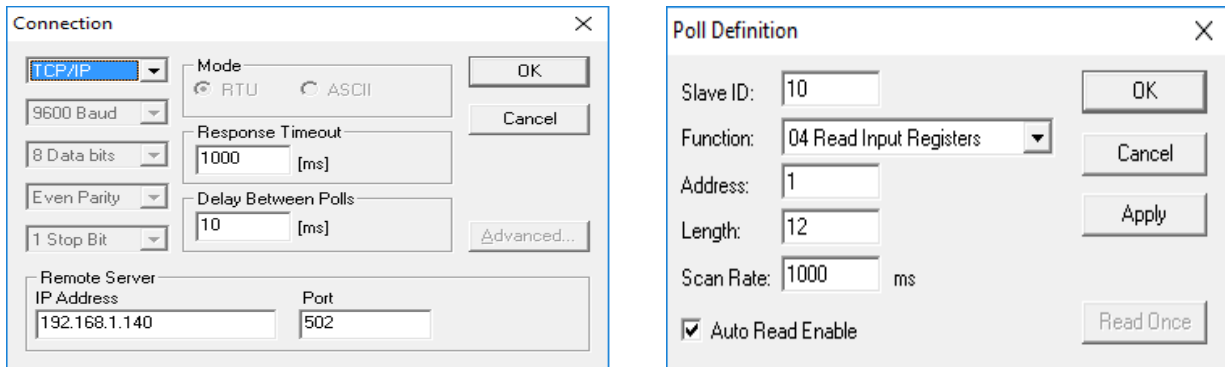
Credentials Saved, Trying to connect Sparr_Modbus to network.
If it fails reconnect to AP to try again.

[Back](#)

Help

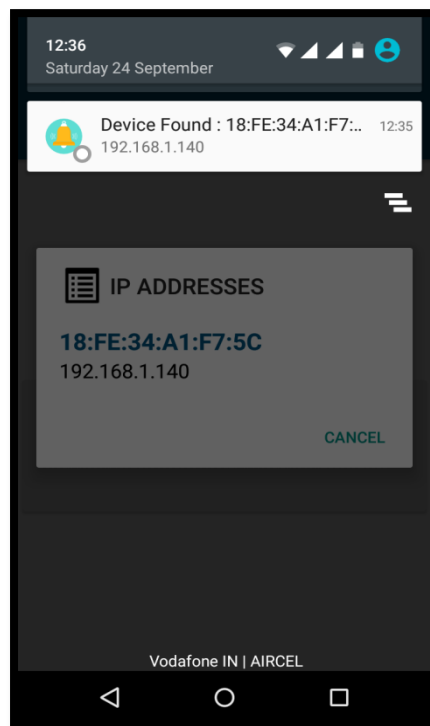
*** How to load default setting ?**
Press default switch for 5 seconds which is located on right side of the device. Once led starts blinking release default switch and restart device.

- 6) Once configuration is done, device disconnects from System/Device and it tries to connect to the configured Wi-Fi.
- 7) Once the device is connected to Wi-Fi Router, Connect LED (red) goes OFF.



Note: Connect your mobile to same network to which the device is configured.

- 8) Now select “GET IP” option in app. Click on OK warning pop-up message. Select the “TAP HERE TO GET DEVICE IP” option to get the device IP address.



- 9) Open the Modbus Poll software, Press F3 or click on “connection” menu from menu bar. Select TCP/IP option and enter the IP address of the unit which is received from the app. Port number is 502 (default). Click on OK.

NOTE: PC and WI-FI device should be connected to same network.

10) Press F2 or select poll definition from setup menu. Enter the parameters. Click on Apply to save the parameter and click OK to exit.

11) Once the device starts to communicate with the PC, the Red LED starts blink.

5. Default Setting

To reset the device to default, press and hold the default switch which is located on right side of the device, till the Connect LED (red) starts to blink. It indicates the device is in default mode, now release the default switch and restart device manually.

6. Contact and Support

Sparr Electronics Limited.,

No.414A, 7th Main Road,
1st Block, HRBR Layout,
Banaswadi,
Bangalore - 560 043, INDIA.
Phone: +91-80-41278033

Call Technical Support at +91-80-41278033

Website : www.sparrl.com
Email for:
Product Information : info@sparrl.com
Support : support@sparrl.com
Sales : sales@sparrl.com