



## EAD-02 SP Quick Start

## Introduction

Use this Quick Start guide as a reference to install and configure your will step you through hardware installation and configuration.

The EAD-02SP requires an IP address for network communications. There are two methods to assign the IP address

- **DHCP:** When connected to a DHCP- enabled network, EAD-02 SP obtains an IP address automatically. By default, the EAD-02SP is DHCP-enabled.
- **Device Installer:** This utility allows you to search for the device and change the IP address to a static address (if required). Device Installer can be downloaded from [http://www.lantronix.com/ftp/DeviceInstaller/4.2.0.4/Di32DL\\_4.2.0.4\\_Web.exe](http://www.lantronix.com/ftp/DeviceInstaller/4.2.0.4/Di32DL_4.2.0.4_Web.exe)

## Setting the IP Address

### IP Address

The EAD-02SP must have an IP address that is unique on your network. If DHCP is not used, the systems administrator generally provides the IP address, subnet mask, and gateway. The IP address must be within a valid range, and in the same subnet as you PC.

**IP Address:** \_\_\_\_\_

**Subnet Mask:** \_\_\_\_\_

**Gateway:** \_\_\_\_\_

### To assign an IP address using the serial port:

1. Connect one end of a null modem cable (shown below) to your PC's serial port.

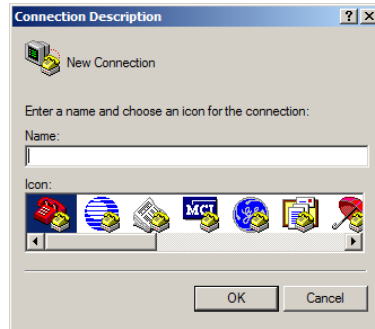


2. Connect the other end of the null modem cable to port 1 of the EAD-02 SP.
3. Open a terminal emulation program to access the Configuration.

To open HyperTerminal, click **Start, Programs, Accessories, Communications, HyperTerminal.**

4. In the Connection Description window, enter a name for this connection.



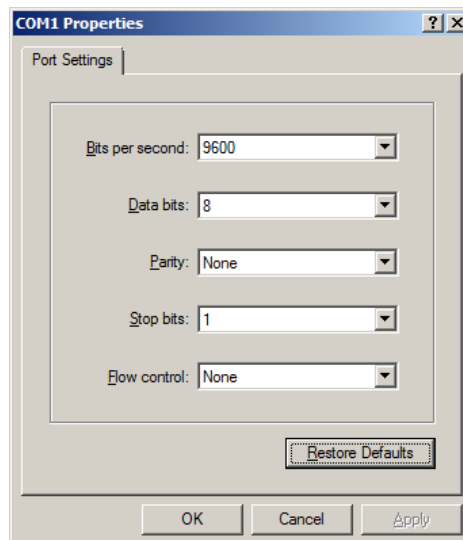


5. In the Connect To window, select **COM1** from the **Connect Using** drop- down menu.  
*Note: If the connection fails, try using **COM2** instead.*



6. Configure the COM1 Properties Window to the following settings:

**Bits per second:** 9600  
**Data Bits:** 8  
**Parity:** None  
**Stop Bits:** 1  
**Flow Control:** None



7. To get to the EAD-02 SP Configuration menu, power on the EAD-02 SP with press and holding “x” (small) key. Wait for “Press Enter For Setup” message and then press Enter key.
8. Configure the IP address and subnet mask. Save and exit the configuration.
9. Ping the IP address of EAD-02 SP for a PC which is there in the same sub netmask and check getting reply.

## Installing DeviceInstaller

1. Open DeviceInstaller after download.
2. Respond to the installation wizard prompts.

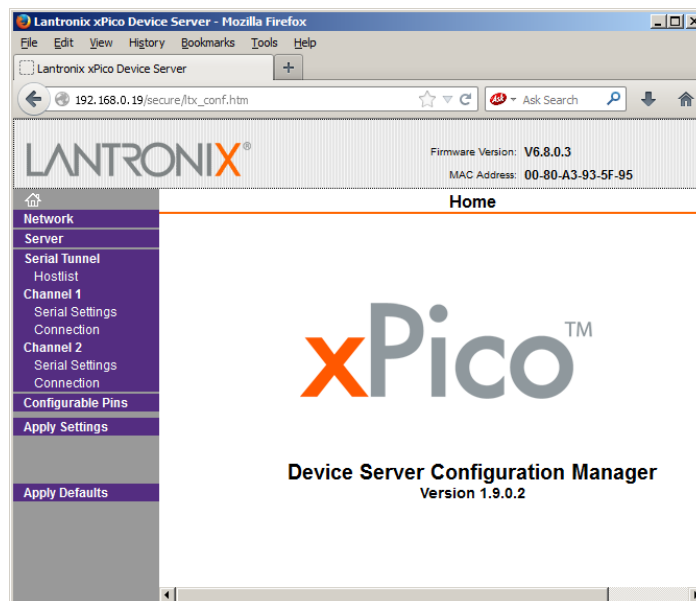
**Note:** For more information about DeviceInstaller, see the DeviceInstaller online Help.

## Configuration Using Web Manager

In this Quick Start Guide, we briefly describe how to configure the EAD-02 SP using Web Manager, Lantronix’s browser-based configuration tool. For detailed information on Web Manager configuration and other methods, please see the EAD-02 SP user guide.

1. Using DeviceInstaller, select the unit and select the **Web Configuration** tab.
2. Click **Go**. The EAD-02 SP Web Manager window displays in the DeviceInstaller window.

**Note:** You can also open a web browser and enter the IP address of the EAD-02 SP to open Web Manager.



3. Use the menu to navigate to sub pages where you can configure the EAD-02 SP. Unless otherwise noted, changes are applied immediately to *EAD-02SP*.

For more information

Please Visit: <http://www.lantronix.com/device-networking/embedded-device-servers/xpico.html>

Contact: support@sparrl.com

