

Serial to Ethernet Adaptor

- EAD is a protocol converter which transmits the Serial Data sent by Equipment as TCP packets to the LAN / Network and converts back the TCP / IP data received from the LAN / Network as Serial data to the equipment. EAD also supports UDP Protocol for Broadcast applications.
- EAD-01 is a low cost, high performance, Serial RS 232 / RS 485 / RS 422 to Ethernet LAN 10 / 100 Mbps connectivity system using the TCP / IP protocol and is based on ARM Cortex M4 High speed 32 - bit Microprocessor. EAD-01 has built-in web server for configuration through Web browser and a factory default switch to load the default configuration setting.

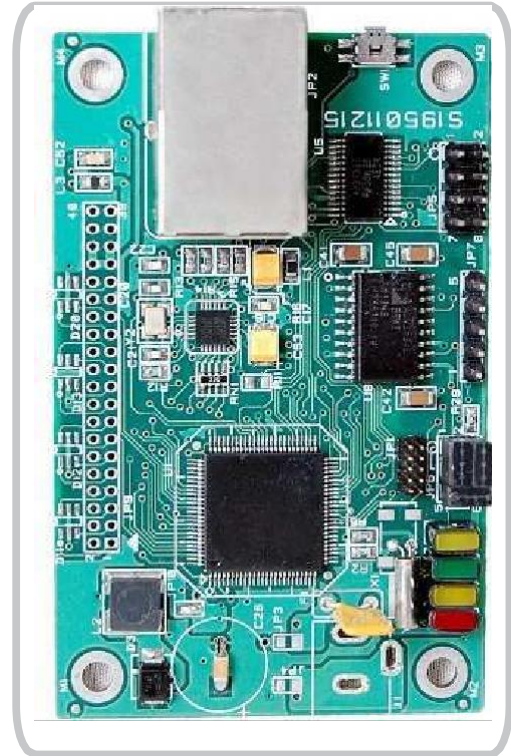
EAD-01-103



Features & Specifications

Serial Interface	
Interface	RS 232, RS 485 / RS 422
Connectors	9 Pin Male D-Type for RS 232, RS 485 and RS 422 4x2 Berg Pins for RS 232, 5x1 Berg Pins for RS 485 / RS 422 (For Board level Product)
Data Rates	300 to 115200 bps
Data Bits	7 or 8
Parity	Odd, Even and No parity
Stop Bits	1 or 2
Flow Control	NONE, XON/XOFF & RTS/CTS
Network Interface	
Interface	Ethernet 10Base-T or 100Base-TX Connector
Connectors	RJ 45 Female
Protocols	TCP, UDP, ARP, ICMP, MAC, Telnet, DHCP & HTTP. SNMP & MODBUS (Optional)
Indicators (LED)	
Red	Power ON
Yellow	Connection Status
Green	Transmit Data from Serial
Yellow	Receive Data to Serial
Processor	
CPU	ARM Cortex M4
Memory	1 MB
Power	
Input	5 to 24 V DC
RS 485 / 422	
Maximum No. of nodes	256
Maximum cable length	1200 m
Isolation	> 2500 Vrms
Environmental	
Operating	0 °C to 55 °C
Storage	-4 °C to 66 °C
Packaging	
Dimensions (LxWxH)	89mm(L) x 93mm(W) x 25mm(H) for Box Product / 79mm(L) x 50mm(W) x 18mm(H) for Board Level
Weight	200 g (Box Level) 30 g (Board Level)
Warranty	12 Months for Box Product, 6 Months for Board level Product

- Access Management in hospitality industry.
- Attendance reader and access control systems.
- Bar_code readers and printers.
- Building Automation & Control.
- Card verification kiosks.
- CNC machine control.
- Industrial Automation.
- Moving digital display board and Video projector Remotemanagement.
- Patient monitoring.
- Point of Sale terminals.
- UPS monitoring, Windmill monitoring and control.
- Vending machine monitoring and control.



Model Number	Description
EAD-01-103	Single Port Ethernet Adaptor
Add suffix:-	
B	For Bord level Product
PB	For Product Enclosed in PlasticBox
MB	Product Enclosed in Metal Box
485	For RS 485 / RS 422 Option
TTL	For TTL level UART
MDB	For MODBUS Support
SNMP	For SNMP Support

Sparr Electronics Limited

No.414A, 7th Main Road,1st Block, HRBR Layout, Banaswadi, Bangalore - 560 043, INDIA.

SPARR
ELECTRONICS
LIMITED

Bangalore: +91-80-41278033
Mumbai: +91-22-26655375

For more details visit:
<http://www.sparrl.com> E-mail: info@sparrl.com